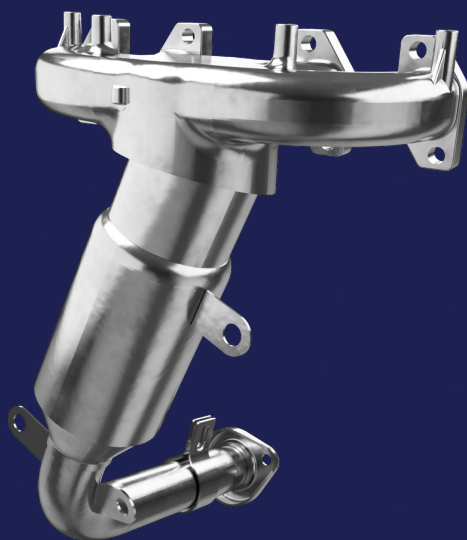
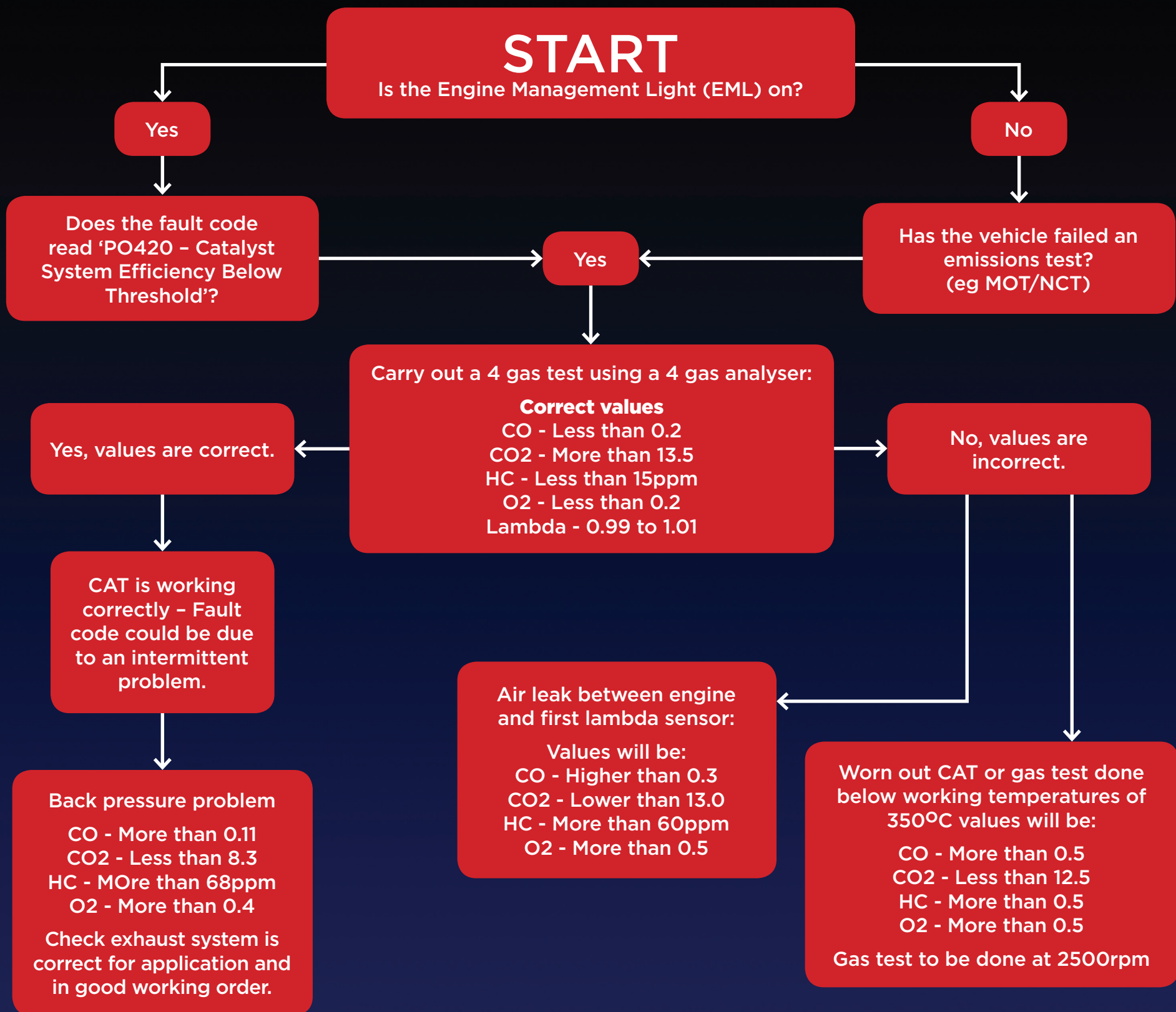


CATALYTIC CONVERTER

DIAGNOSTICS AND FITMENT GUIDE



Advice list

The Catalytic Converter is a key part of the vehicles Emission Control System. At working temperature (>350c) it converts harmful gasses from combustion, into less harmful ones. In good working conditions a Catalytic Converter should never fail, usually they fail due to vehicle maintenance issues or external factors (including driving style). When replacing a Catalytic Converter, always diagnose and repair, any vehicle faults that may have caused the failure, to avoid the same issue re-occurring.

- Always use a new fitting kit when replacing a catalytic converter.
- Always carry out a 4 gas test.
- Ensure there are no air leaks in the inlet manifold or exhaust system.
- Carry out regular servicing.
- It is advisable to replace the lambda sensors when fitting a new CAT.

www.klarius.eu

Technical Helpline: +44 (0) 1538 752261



KlariusTM

The Emissions Experts



The 4 gas emissions values quoted are a few of the many examples of issues that could be interpreted as a failed catalytic converter.