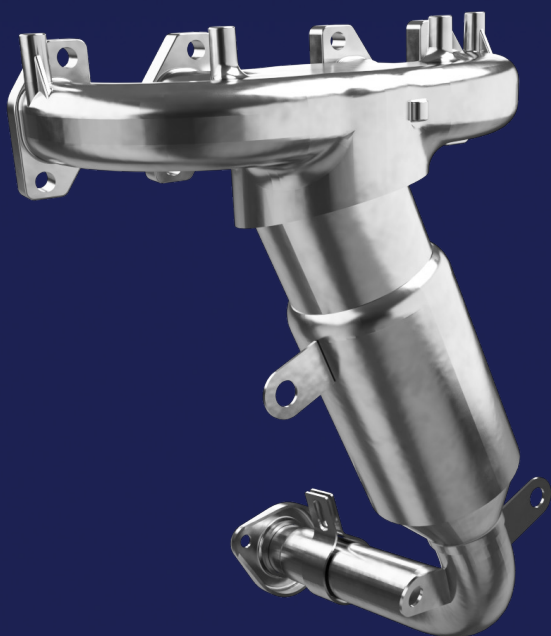
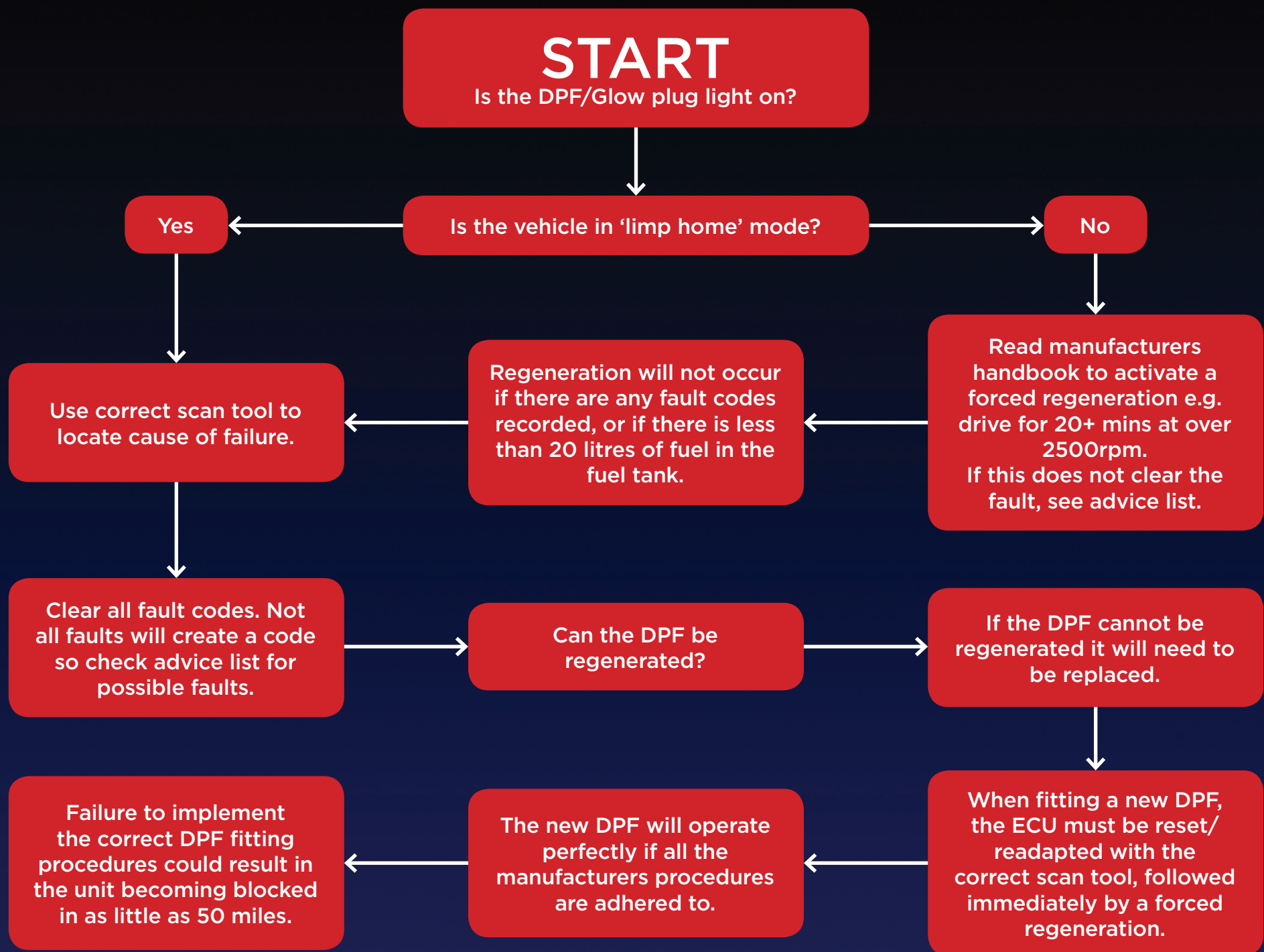


DIESEL PARTICULATE FILTER (DPF) - DIAGNOSTICS AND FITMENT GUIDE



www.klarius.eu

Advice list

DPF's are service items that will need replacing at 75,000 miles depending on driving style and vehicle manufacturer

Possible faults

- Faulty EGR valve
- Incorrect engine oil
- Contaminated engine oil
- ECU fault
- Lack of DPF additive fluid
- Faulty DPF pressure sensor
- Temperature sensor
- Damaged pipework to the pressure sensor
- Incorrect fuel pressure
- Examine the turbo for damage: e.g. oil seals, bearings, oil feed pipes etc
- Air filter
- Oil filter
- Exhaust system back pressure



The Emissions Experts

